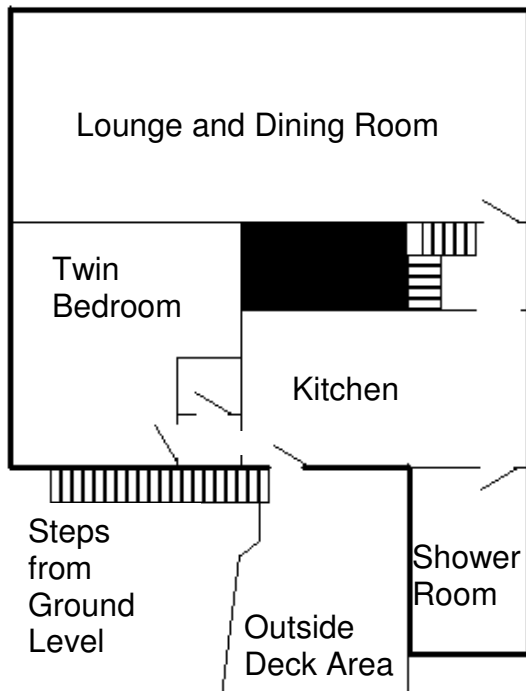
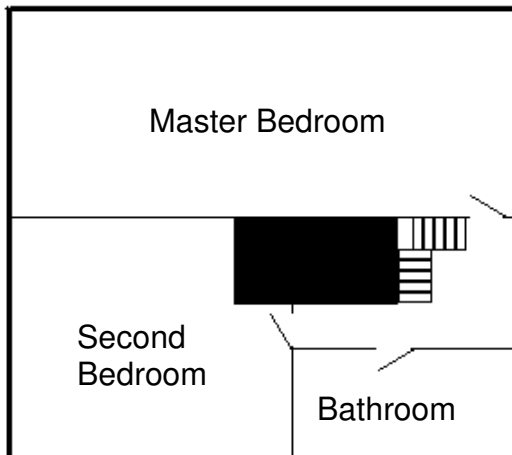


Lodge Layout



Above: First Floor Plan,

Below: Second Floor Plan.



Directions

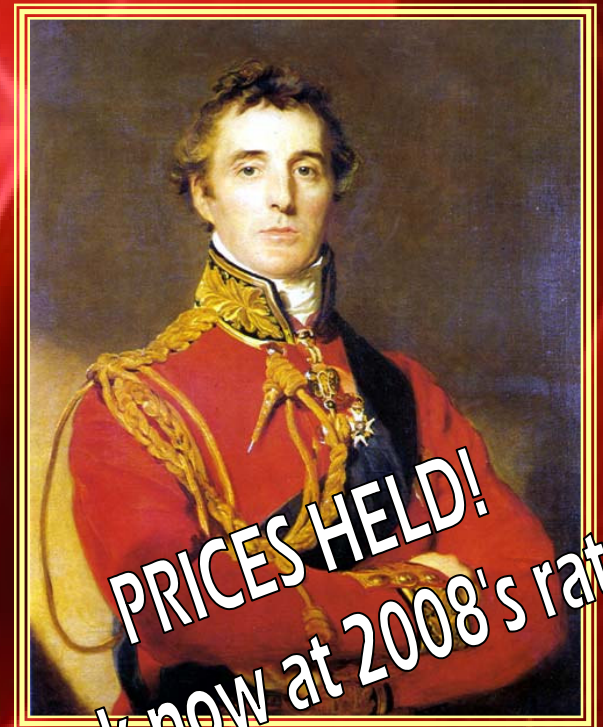
From London via the M20/A20

- Stay on the M20, passing Folkestone and heading towards Dover on the A20.
- At the end of the A20 you will arrive at several roundabouts. Cross directly over the first four you encounter (You will also encounter several sets of traffic lights) heading towards Dover Eastern Docks (ferry terminal).
- At the roundabout directly outside the Port of Dover, take a right exit onto the Jubilee Way (flyover).
- At the top of the Jubilee Way, take the right hand exit of the roundabout onto the A258 for Deal.
- Stay on this road. There are two active speed cameras on this road. You will pass through the small village of Ringwoud.
- The next village is Walmer, which is on the outskirts of Deal.
- Continue straight on. You will pass a Texaco garage on your left.
- Continue straight on. Eventually the road will veer round to the left with the Walmer green and bandstand on your right. This is The Strand. Continue onwards.
- About 1/4 of a mile ahead, on the right, is Deal Castle. Immediately after passing this you see a large B&B on the right hand side of the cross junction ahead of you (Keep House).
- Take the turning immediately after this B&B up towards Deal Seafront (get into the right hand lane after you pass the B&B).
- Take a left at the end of this road. You will reach a small roundabout (and the pier on the right hand side).

Wellingtons Lodge is Located above the Cafe on the corner of this roundabout. You have arrived.

Wellingtons Lodge

Self Catering Apartment
Deal, Kent



PRICES HELD!
Book now at 2008's rates!

www.wellingtons-lodge.com
+44 (0)1304 364564



Deal Castle

Situated in the peaceful town of Deal, Kent, Wellingtons Lodge self catering apartment offers spectacular views over the English Channel. Refurbished to high standards in late 2007, the Lodge is suitable for couples and groups (comfortably accommodating between 6 and 8 persons) and is available throughout the year.

Lodge Particulars

SLEEPING ARRANGMENTS

3 Bedrooms comprising of:-
2 Bedrooms with Double Beds
1 Bedroom with 2 Single Beds

Additionally, the Lounge benefits from a Bed Settee (Adult Double) capable of sleeping two persons.

WASH FACILITIES

1 Bathroom on the second level.
1 Shower Room on the lower level.

LAUNDRY ROOM

Comprising washing machine, tumble dryer and ironing board / iron.

KITCHEN

Range Cooker, Fridge and Freezer, Microwave, Dishwasher, and all utensils, crockery and cutlery inclusive during your stay.

Lodge Policies

- Due to its location on the first and second floors, we regret that the Lodge is not suitable for children under the age of 5 years. Persons with limited mobility may also find the lodge unsuitable.
- The Lodge is non-smoking in all rooms, although smokers are welcome to use the exterior decking area.
- Pets are subject to the management's discretion.
- A security deposit may be required in some instances. If this is the case, you will be informed of this during the booking process.



- A weekly maid service is available for the renewal of bedding and towels only. This applies only to bookings of 7 nights or longer.
- The price you pay is inclusive of any taxes, water, electric and gas rates. Linen and Towels are included in the price of your stay.
- For a full list of our terms and conditions, please see our website.

Pricing

Our pricing is on a nightly basis, and starts from as little as £75 per night for two. See our online booking system for all our current offers, which currently includes staying from as little as £12.50 per person (correct as of October 2009).

Meals

Although we do not offer meals within the lodge pricing, patrons of the Lodge are welcome to join us in the café below for All Day Breakfasts, Lunches or Snacks throughout the day.

Other Facilities

Internet access is available from the Deal Learning Centre directly behind the Lodge. Boat hire can be arranged before your arrival.

Making a booking

Book your stay directly via our website. It's all secure, and your internet payment guarantees your selected dates with us. We accept most forms of credit and debit card at our website.

<http://www.wellingtons-lodge.com>

or if you do not have internet access, or would like to speak to us directly, you can contact us by telephone on:

01304 364564 or 01304 365326

(International Callers Dial + 44 1304 364564)

Or write to us at:

Wellingtons Lodge.
27 Beach Street, Deal, Kent.
CT146HY. United Kingdom.

We look forward to welcoming you to Deal!